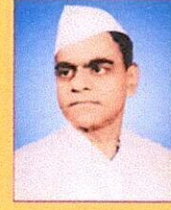




**Janata Shikshan Sanstha's
Kisan Veer Mahavidyalaya, Wai
Department of Hindi
Level of Attainment
2018-19**



Level 0	Percentage of student scoring 45 % and above marks is equal to 0 %
Level 1	Percentage of student scoring 45 % and above marks is greater than 0% but less than 20 %
Level 2	Percentage of student scoring 45 % and above marks greater than or equal to 20% but less than 40%
Level 3	Percentage of student scoring 45 % and above marks greater than or equal to 40 %

Level of attainment by Direct Method (Internal Evaluation and University Exam)

Class : B.A. III (Hindi) Sem V

Total no. of students enrolled : 24

Name of the paper/ course	Internal Evaluation			University Exam			
	No. of students score 45% or more in Home Assignment	% of students Scoring more than 45 % or more in Home Assignment	Level of Attainment (a)	Total No. of Appeared students	No. of student score 45 % or more marks	% of students Scoring more than 45 % or more marks	Level of Attainment
Paper VII	24	100	3	24	23	95.83333	3
Paper VIII	24	100	3	24	12	50	3
Paper IX	24	100	3	24	11	45.83333	3
Paper X	24	100	3	24	20	83.33333	3
Paper XI	24	100	3	24	7	29.16667	2



Level of attainment by Direct Method (Internal Evaluation and University Exam)

Class : B.A. III (Hindi) Sem VI

Total no. of students enrolled : 24

Name of the paper/ course	Internal Evaluation			University Exam			
	No. of students score 45% or more in Home Assignment	% of students Scoring more than 45 % or more in Home Assignment	Level of Attainment (a)	Total No. of Appeared students	No. of student score 45 % or more marks	% of student s Scoring more than 45 % or more marks	Level of Attainment
Paper XII	24	100	3	24	16	66.6666	3
Paper XIII	24	100	3	24	21	87.5	3
Paper XIV	24	100	3	24	14	58.3333	3
Paper XV	24	100	3	24	14	58.3333	3
Paper XVI	24	100	3	24	16	66.6666	3

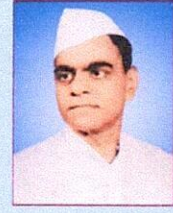
Level of attainment by Indirect Method (Placement, Self Employed, Progression)

Name of method	No. of students enrolled	No. of students	% of students	Total %	Level of Attainment
Placement	24	0	0	16.6666	7 1
Progression	24	4	16.66667		
Self employed	24	0	0		





Janata Shikshan Sanstha's
Kisan Veer Mahavidyalaya, Wai
Department of Hindi
Level of Attainment
2018-19



Name of Course/ Paper	Attainment level in Sem V		Attainment level in Sem VI		Average level of Attainment
	Internal Evaluation	University Examination	Internal Evaluation	University Examination	
Paper VII	3	3	NA	NA	3
Paper VIII	3	3	NA	NA	2
Paper IX	3	3	NA	NA	3
Paper X	3	3	NA	NA	3
Paper XI	3	2	NA	NA	3
Paper XII	NA	NA	3	3	3
Paper XIII	NA	NA	3	3	3
Paper XIV	NA	NA	3	3	3
Paper XV	NA	NA	3	3	3
Paper XVI	NA	NA	3	3	3
Level of attainment by Indirect Method 2 (Placement, Self Employed, Progression)					1
Average Level of Attainment					2.7
The target level of attainment 2.5 is achieved					

Head

Head

Department of Hindi
Kisan Veer Mahavidyalaya, Wai

IQAC Co-ordinator
Coordinator

Internal Quality Assurance Cell
Kisan Veer Mahavidyalaya, Wai
Tal. Wai, Dist. Satara



Principal

Principal
Kisan Veer Mahavidyalaya, Wai
Tal. Wai, Dist. Satara